



AQUIND Limited

AQUIND INTERCONNECTOR

Environmental Statement – Volume 3 –
Appendix 16.14 Winter Working Restriction for
Features of Chichester & Langstone Harbours
SPA - Low Resolution - Low Resolution Part 3

The Planning Act 2008

The Infrastructure Planning (Applications: Prescribed Forms and Procedure) Regulations
2009 – Regulation 5(2)(a)

The Infrastructure Planning (Environmental Impact Assessment) Regulations 2017

Document Ref: 6.3.16.14

PINS Ref.: EN020022

AQUIND Limited

AQUIND INTERCONNECTOR

Environmental Statement – Volume 3 –
Appendix 16.14 Winter Working Restriction for
Features of Chichester & Langstone Harbours
SPA - Low Resolution Part 3

PINS REF.: EN020022

DOCUMENT: 6.3.16.14

DATE: 14 NOVEMBER 2019

WSP

WSP House

70 Chancery Lane

London

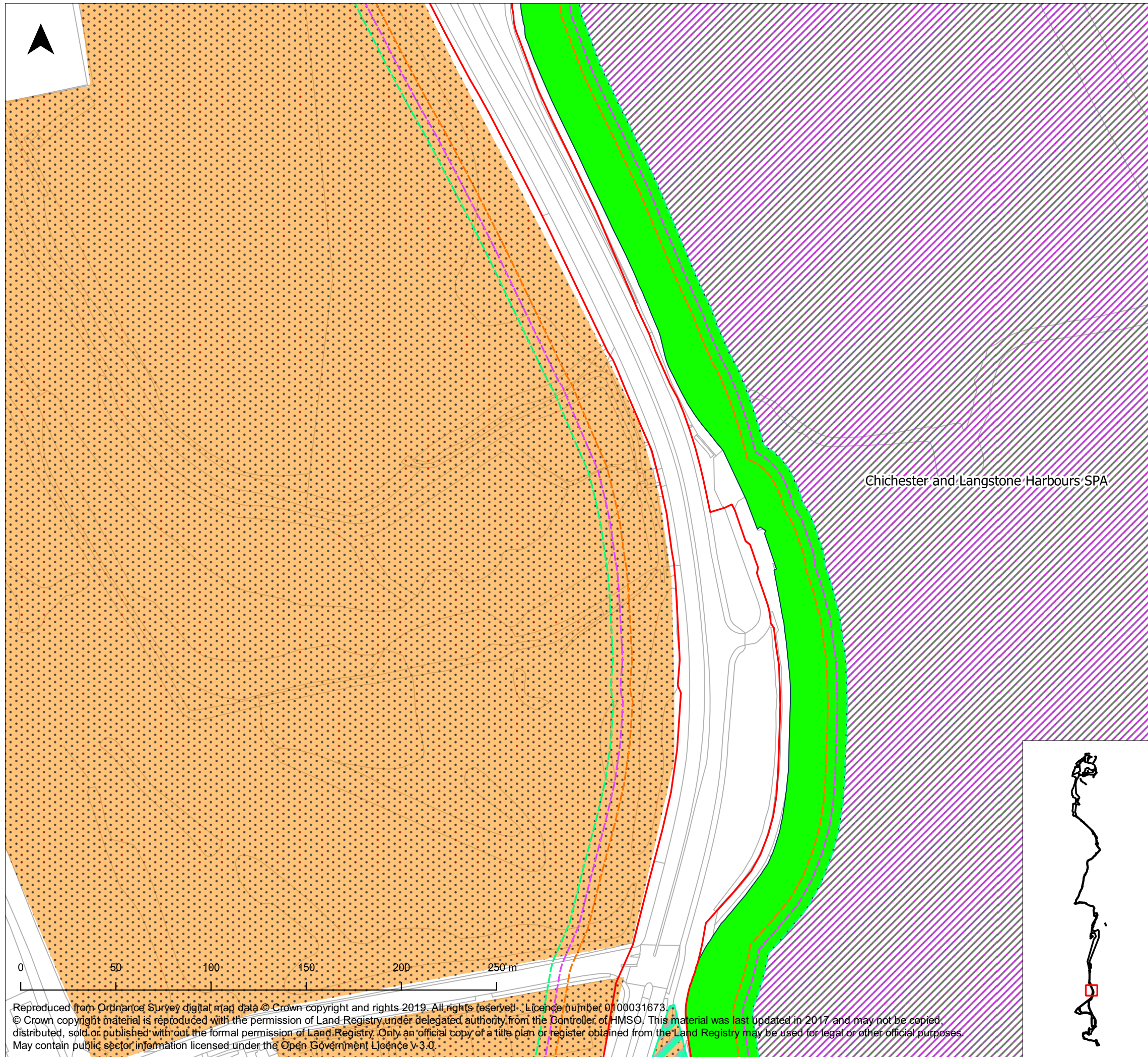
WC2A 1AF

+44 20 7314 5000

www.wsp.com

DOCUMENT

Document	6.3.16.14 Environmental Statement – Volume 3 – Appendix 16.14 Winter Working Restriction for Features of Chichester & Langstone Harbours SPA Low Resolution Part 3
Revision	001
Document Owner	WSP UK Limited
Prepared By	I. Ellis
Date	31 October 2019
Approved By	P. Joyce
Date	31 October 2019



- Legend**
- Order Limits
 - Principle 1 - no winter works in SWBGS Sites
 - Principle 6 - background noise masks construction noise
 - Principle 7 - construction noise >70dB restricted in winter
 - 25m Noise Contour - Minimum possible 70db threshold
 - 30m Noise Contour - Most likely 70db threshold
 - 35m Noise Contour - Maximum possible 70db threshold
 - SPAs
 - SWBGS Sites

Infrastructure Planning (Applications: Prescribed Forms and Procedure) Regulations 2009 - Regulation 5(2)(l)

REV	DATE	BY	DESCRIPTION	CHK	APP
01	16/10/19	PJ	Original	IE	CM

DRAWING STATUS: **FINAL**



WSP House, 70 Chancery Lane, London, WC2A 1AF, UK,
T+ 44 (0) 020 7314 5000
wsp.com

CLIENT



PROJECT:
AQUIND Interconnector

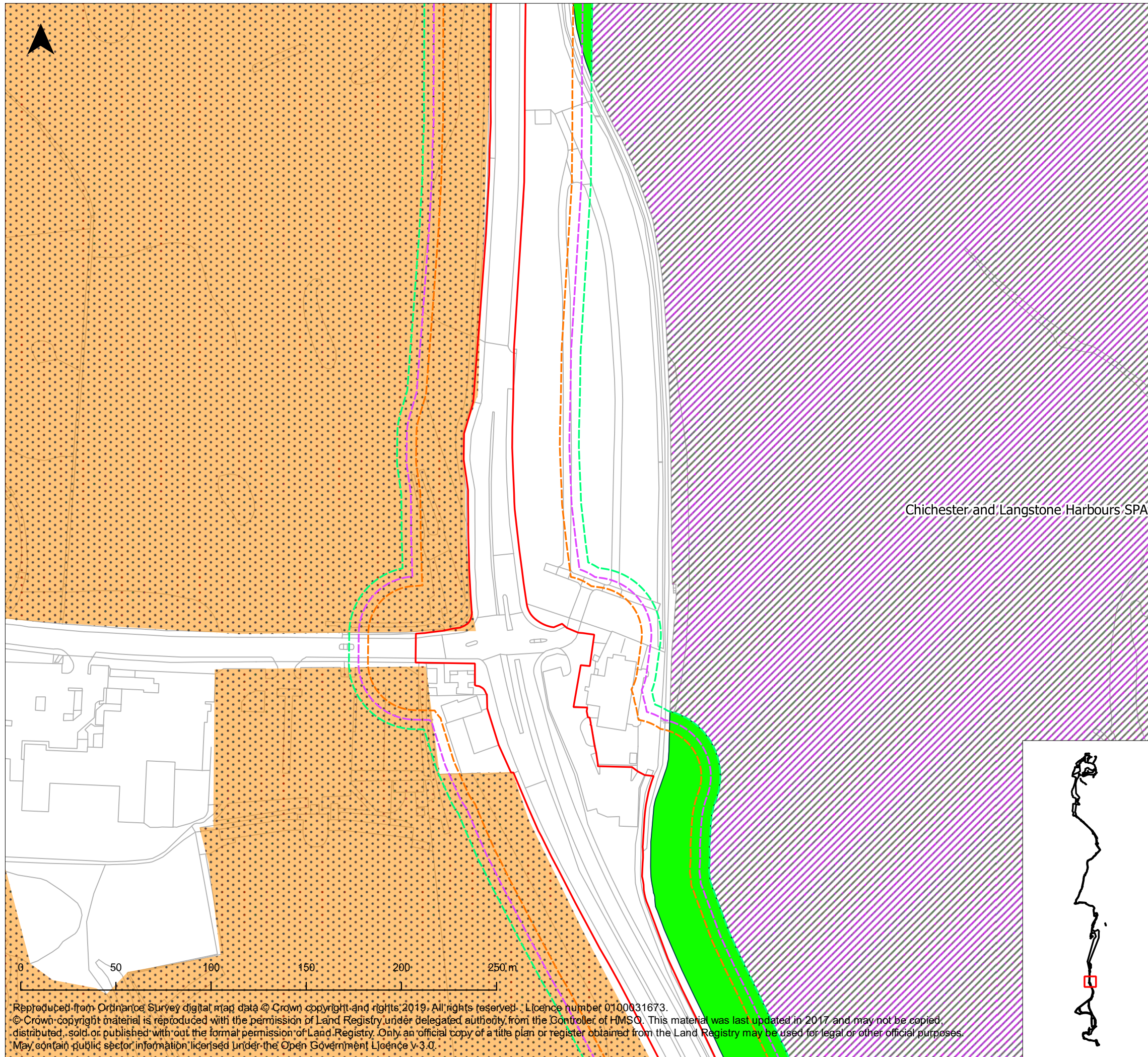
TITLE:
**Figure 2 - Application of winter restriction principles
Sheet 8 of 15**

SCALE AT A3: 1:2000	CHECKED: IE	APPROVED: CM
PROJECT NO: EN020022	DESIGNED: PJ	DRAWN: PJ
		DATE: 16/10/19

DRAWING NO: EN020022-ES-APP-16.14-2	REV NO. 01
--	---------------

© WSP UK Ltd

Reproduced from Ordnance Survey digital map data © Crown copyright and rights 2019. All rights reserved. Licence number 0100031673.
© Crown copyright material is reproduced with the permission of Land Registry under delegated authority from the Controller of HMSO. This material was last updated in 2017 and may not be copied, distributed, sold or published without the formal permission of Land Registry. Only an official copy of a title plan or register obtained from the Land Registry may be used for legal or other official purposes.
May contain public sector information licensed under the Open Government Licence v.3.0.



- Legend**
- Order Limits
 - Principle 1 - no winter works in SWBGS Sites
 - Principle 6 - background noise masks construction noise
 - Principle 7 - construction noise >70dB restricted in winter
 - 25m Noise Contour - Minimum possible 70db threshold
 - 30m Noise Contour - Most likely 70db threshold
 - 35m Noise Contour - Maximum possible 70db threshold
 - SPAs
 - SWBGS Sites

Infrastructure Planning (Applications: Prescribed Forms and Procedure) Regulations 2009 - Regulation 5(2)(l)

REV	DATE	BY	DESCRIPTION	CHK	APP
01	16/10/19	PJ	Original	IE	CM

DRAWING STATUS: **FINAL**

Chichester and Langstone Harbours SPA



WSP House, 70 Chancery Lane, London, WC2A 1AF, UK,
T+ 44 (0) 020 7314 5000
wsp.com

CLIENT



PROJECT:
AQUIND Interconnector

TITLE:
**Figure 2 - Application of winter restriction principles
Sheet 9 of 15**

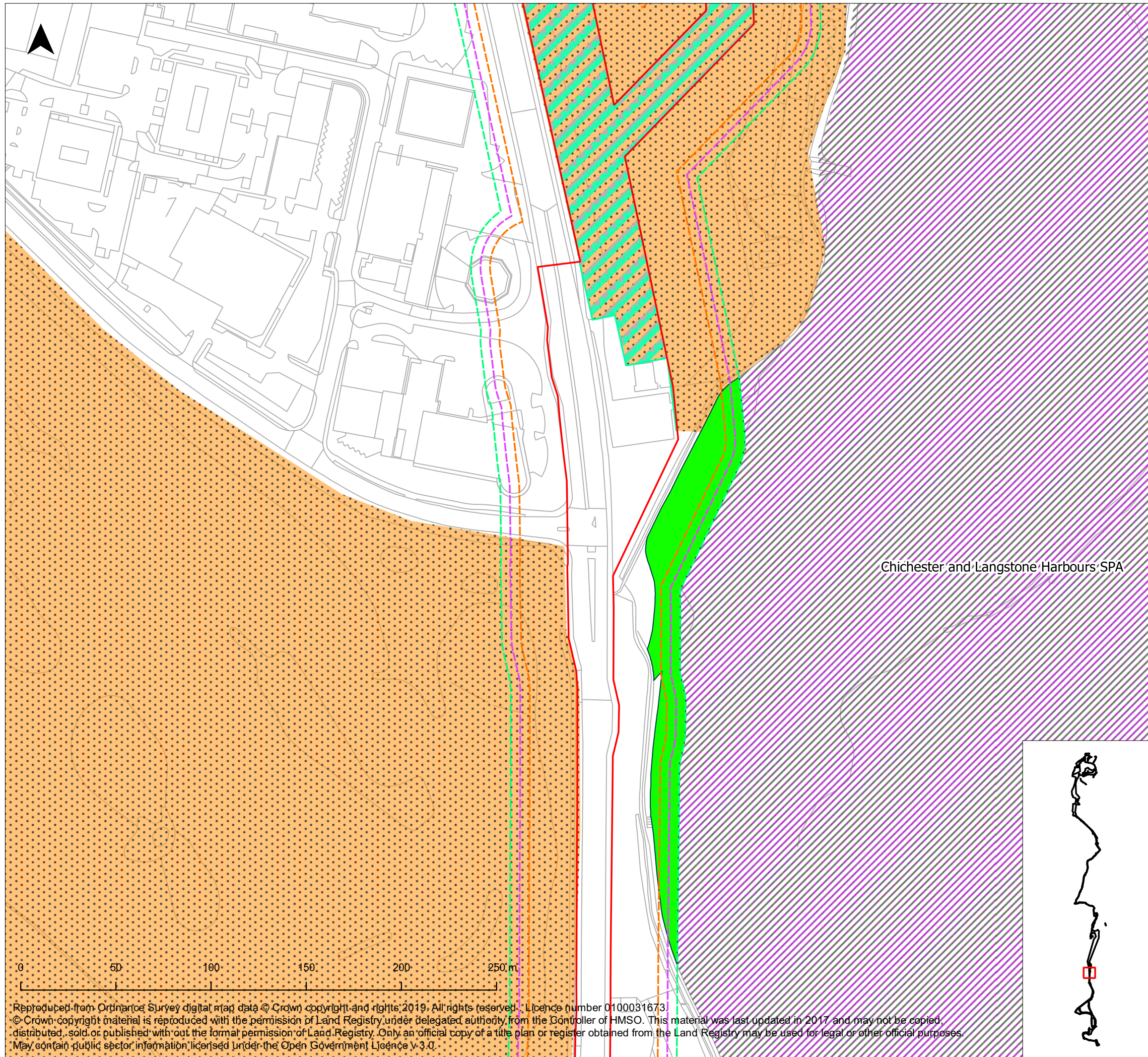
SCALE AT A3: 1:2000	CHECKED: IE	APPROVED: CM
------------------------	----------------	-----------------

PROJECT NO: EN020022	DESIGNED: PJ	DRAWN: PJ	DATE: 16/10/19
-------------------------	-----------------	--------------	-------------------

DRAWING NO: EN020022-ES-APP-16.14-2	REV NO: 01
--	---------------

© WSP UK Ltd

Reproduced from Ordnance Survey digital map data © Crown copyright and rights 2019. All rights reserved. Licence number 0100031673.
© Crown copyright material is reproduced with the permission of Land Registry under delegated authority from the Controller of HMSO. This material was last updated in 2017 and may not be copied, distributed, sold or published without the formal permission of Land Registry. Only an official copy of a title plan or register obtained from the Land Registry may be used for legal or other official purposes.
May contain public sector information licensed under the Open Government Licence v.3.0.



- Legend**
- Order Limits
 - Principle 1 - no winter works in SWBGS Sites
 - Principle 6 - background noise masks construction noise
 - Principle 7 - construction noise >70dB restricted in winter
 - 25m Noise Contour - Minimum possible 70db threshold
 - 30m Noise Contour - Most likely 70db threshold
 - 35m Noise Contour - Maximum possible 70db threshold
 - SPAs
 - SWBGS Sites

Infrastructure Planning (Applications: Prescribed Forms and Procedure) Regulations 2009 - Regulation 5(2)(l)

REV	DATE	BY	DESCRIPTION	CHK	APP
01	16/10/19	PJ	Original	IE	CM

DRAWING STATUS: **FINAL**


 WSP House, 70 Chancery Lane, London, WC2A 1AF, UK,
 T+ 44 (0) 020 7314 5000
 wsp.com

CLIENT



PROJECT:

AQUIND Interconnector

TITLE:

**Figure 2 - Application of winter restriction principles
Sheet 10 of 15**

SCALE AT A3: 1:2000	CHECKED: IE	APPROVED: CM
PROJECT NO: EN020022	DESIGNED: PJ	DRAWN: PJ
		DATE: 16/10/19

DRAWING NO: EN020022-ES-APP-16.14-2	REV NO. 01
--	---------------

Reproduced from Ordnance Survey digital map data © Crown copyright and rights 2019. All rights reserved. Licence number 0100031673.
 © Crown copyright material is reproduced with the permission of Land Registry under delegated authority from the Controller of HMSO. This material was last updated in 2017 and may not be copied, distributed, sold or published without the formal permission of Land Registry. Only an official copy of a title plan or register obtained from the Land Registry may be used for legal or other official purposes.
 May contain public sector information licensed under the Open Government Licence v.3.0.



- Legend**
- Order Limits
 - Principle 1 - no winter works in SWBG Sites
 - Principle 6 - background noise masks construction noise
 - Principle 7 - construction noise >70dB restricted in winter
 - 25m Noise Contour - Minimum possible 70db threshold
 - 30m Noise Contour - Most likely 70db threshold
 - 35m Noise Contour - Maximum possible 70db threshold
 - SPAs
 - SWBG Sites

Infrastructure Planning (Applications: Prescribed Forms and Procedure) Regulations 2009 - Regulation 5(2)(l)

REV	DATE	BY	DESCRIPTION	CHK	APP
01	16/10/19	PJ	Original	IE	CM

DRAWING STATUS: **FINAL**



WSP House, 70 Chancery Lane, London, WC2A 1AF, UK,
T+ 44 (0) 020 7314 5000
wsp.com



PROJECT:
AQUIND Interconnector

TITLE:
**Figure 2 - Application of winter restriction principles
Sheet 11 of 15**

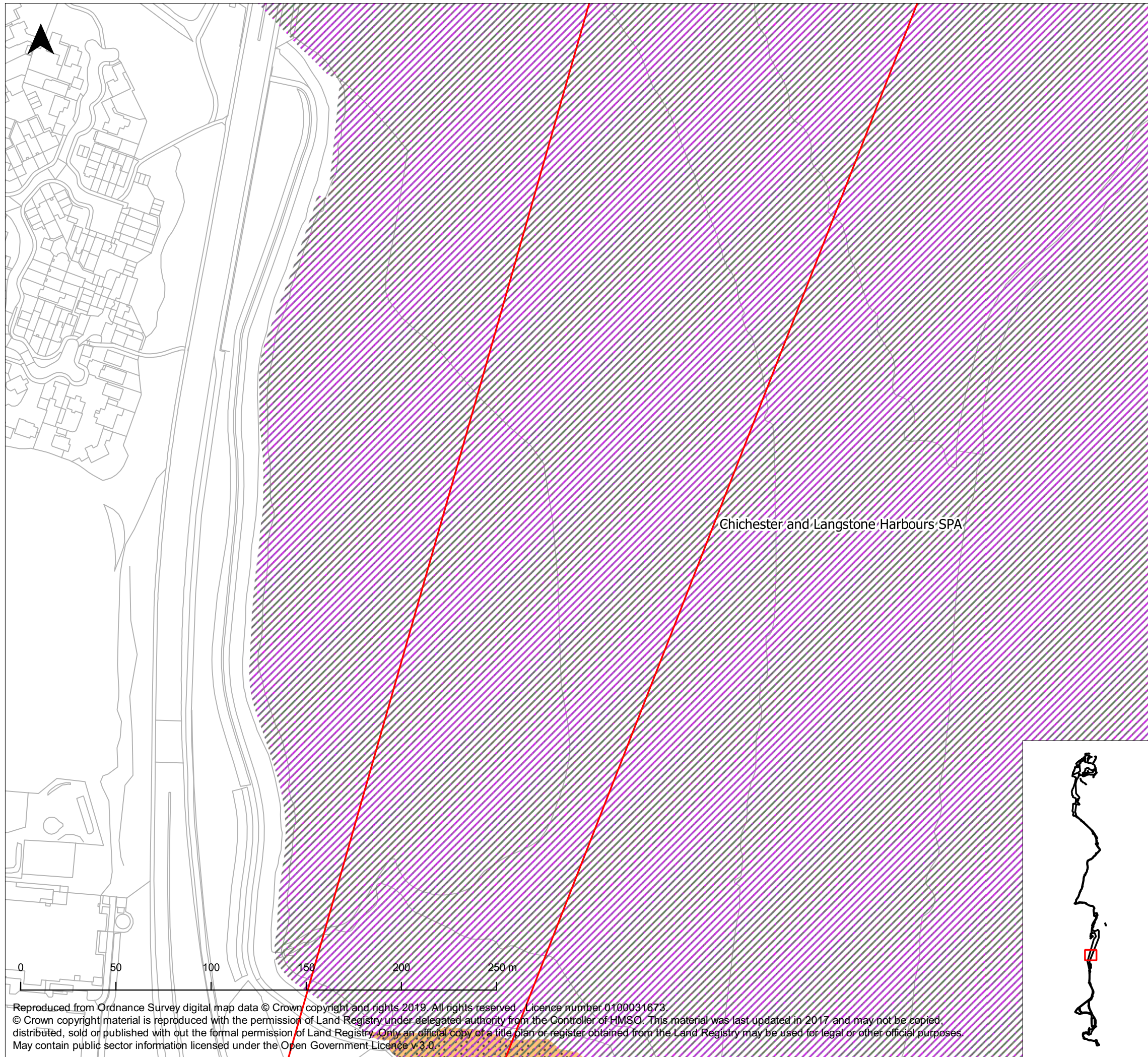
SCALE AT A3: 1:2000	CHECKED: IE	APPROVED: CM
------------------------	----------------	-----------------

PROJECT NO: EN020022	DESIGNED: PJ	DRAWN: PJ	DATE: 16/10/19
-------------------------	-----------------	--------------	-------------------

DRAWING NO: EN020022-ES-APP-16.14-2	REV NO. 01
--	---------------

© WSP UK Ltd

Reproduced from Ordnance Survey digital map data © Crown copyright and rights 2019. All rights reserved. Licence number 0100031673.
© Crown copyright material is reproduced with the permission of Land Registry under delegated authority from the Controller of HMSO. This material was last updated in 2017 and may not be copied, distributed, sold or published without the formal permission of Land Registry. Only an official copy of a title plan or register obtained from the Land Registry may be used for legal or other official purposes.
May contain public sector information licensed under the Open Government Licence v 3.0.



- Legend**
- Order Limits
 - Principle 1 - no winter works in SWBGS Sites
 - Principle 6 - background noise masks construction noise
 - Principle 7 - construction noise >70dB restricted in winter
 - 25m Noise Contour - Minimum possible 70db threshold
 - 30m Noise Contour - Most likely 70db threshold
 - 35m Noise Contour - Maximum possible 70db threshold
 - SPAs
 - SWBGS Sites

Infrastructure Planning (Applications: Prescribed Forms and Procedure) Regulations 2009 - Regulation 5(2)(l)

REV	DATE	BY	DESCRIPTION	CHK	APP
01	16/10/19	PJ	Original	IE	CM

DRAWING STATUS: **FINAL**

Chichester and Langstone Harbours SPA



WSP House, 70 Chancery Lane, London, WC2A 1AF, UK,
T+ 44 (0) 020 7314 5000
wsp.com

CLIENT

PROJECT:
AQUIND Interconnector

TITLE:
**Figure 2 - Application of winter restriction principles
Sheet 12 of 15**

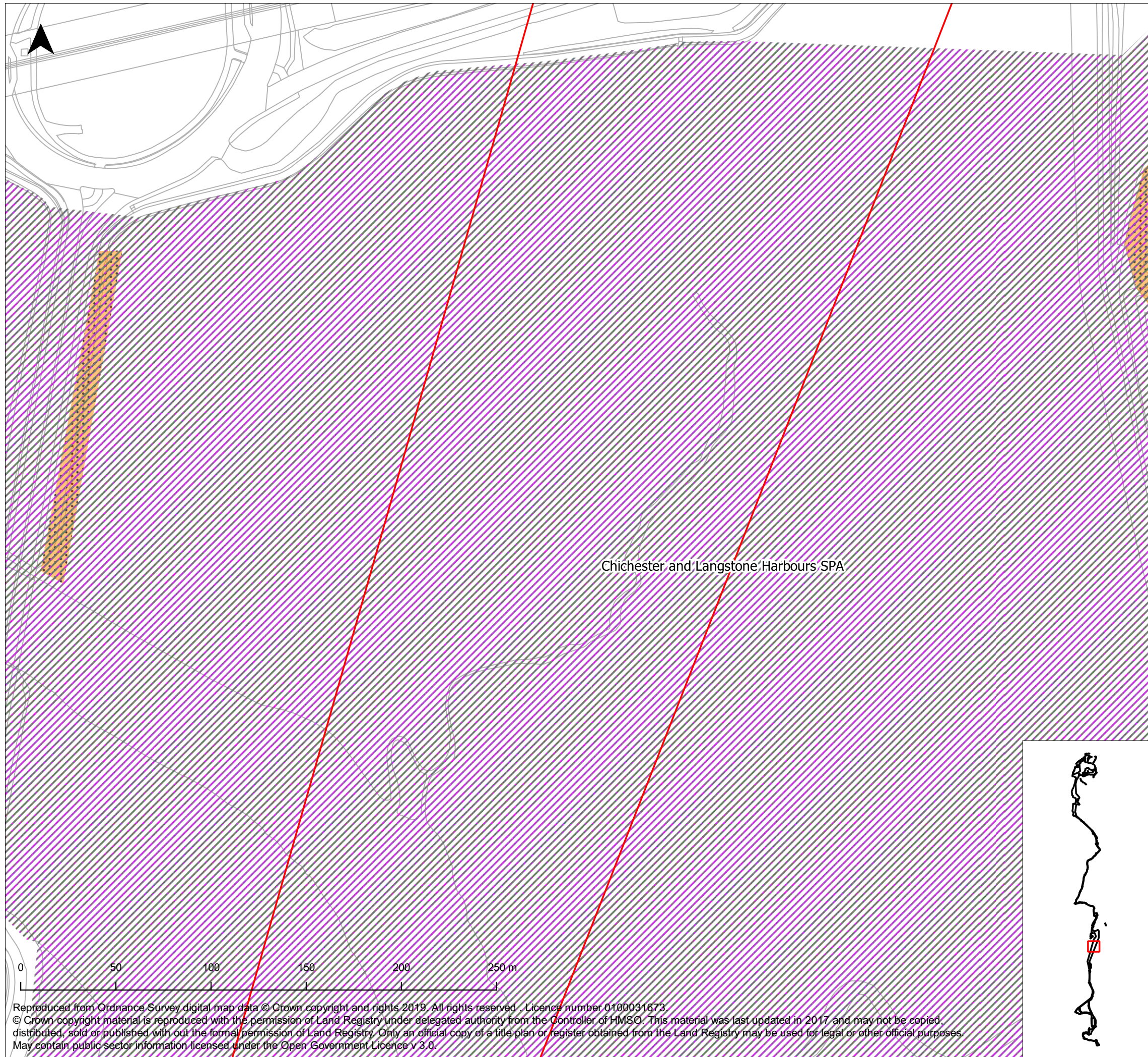
SCALE AT A3: 1:2000	CHECKED: IE	APPROVED: CM
------------------------	----------------	-----------------

PROJECT NO: EN020022	DESIGNED: PJ	DRAWN: PJ	DATE: 16/10/19
-------------------------	-----------------	--------------	-------------------

DRAWING NO: EN020022-ES-APP-16.14-2	REV NO. 01
--	---------------

© WSP UK Ltd

Reproduced from Ordnance Survey digital map data © Crown copyright and rights 2019. All rights reserved. Licence number 0100031673.
© Crown copyright material is reproduced with the permission of Land Registry under delegated authority from the Controller of HMSO. This material was last updated in 2017 and may not be copied, distributed, sold or published with out the formal permission of Land Registry. Only an official copy of a title plan or register obtained from the Land Registry may be used for legal or other official purposes.
May contain public sector information licensed under the Open Government Licence v 3.0.



Legend

- Order Limits
- Principle 1 - no winter works in SWBGS Sites
- Principle 6 - background noise masks construction noise
- Principle 7 - construction noise >70dB restricted in winter
- 25m Noise Contour - Minimum possible 70db threshold
- 30m Noise Contour - Most likely 70db threshold
- 35m Noise Contour - Maximum possible 70db threshold
- SPAs
- SWBGS Sites

Infrastructure Planning (Applications: Prescribed Forms and Procedure) Regulations 2009 - Regulation 5(2)(l)

01	16/10/19	PJ	Original	IE	CM
REV	DATE	BY	DESCRIPTION	CHK	APP

DRAWING STATUS: **FINAL**



WSP House, 70 Chancery Lane, London, WC2A 1AF, UK,
T+ 44 (0) 020 7314 5000
wsp.com

CLIENT



PROJECT:
AQUIND Interconnector

TITLE:
**Figure 2 - Application of winter restriction principles
Sheet 13 of 15**

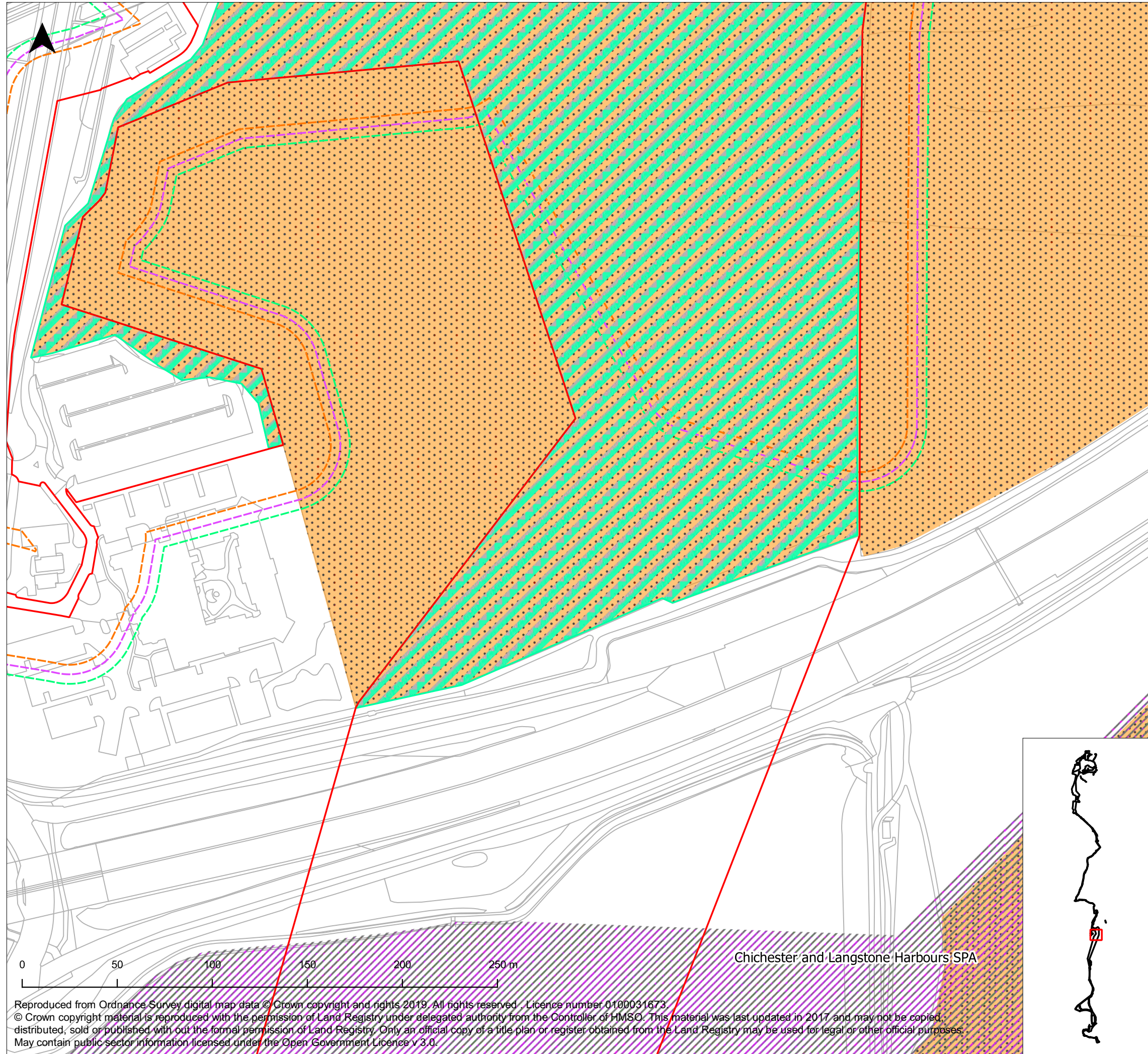
SCALE AT A3: 1:2000	CHECKED: IE	APPROVED: CM
------------------------	----------------	-----------------

PROJECT NO: EN020022	DESIGNED: PJ	DRAWN: PJ	DATE: 16/10/19
-------------------------	-----------------	--------------	-------------------

DRAWING NO: EN020022-ES-APP-16.14-2	REV NO. 01
--	---------------

© WSP UK Ltd

Reproduced from Ordnance Survey digital map data © Crown copyright and rights 2019. All rights reserved. Licence number 0100031673.
© Crown copyright material is reproduced with the permission of Land Registry under delegated authority from the Controller of HMSO. This material was last updated in 2017 and may not be copied, distributed, sold or published without the formal permission of Land Registry. Only an official copy of a title plan or register obtained from the Land Registry may be used for legal or other official purposes.
May contain public sector information licensed under the Open Government Licence v 3.0.



Legend

- Order Limits
- Principle 1 - no winter works in SWBGS Sites
- Principle 6 - background noise masks construction noise
- Principle 7 - construction noise >70dB restricted in winter
- 25m Noise Contour - Minimum possible 70db threshold
- 30m Noise Contour - Most likely 70db threshold
- 35m Noise Contour - Maximum possible 70db threshold
- SPAs
- SWBGS Sites

Infrastructure Planning (Applications: Prescribed Forms and Procedure) Regulations 2009 - Regulation 5(2)(l)

01	16/10/19	PJ	Original	IE	CM
REV	DATE	BY	DESCRIPTION	CHK	APP

DRAWING STATUS: **FINAL**



WSP House, 70 Chancery Lane, London, WC2A 1AF, UK,
T+ 44 (0) 020 7314 5000
wsp.com

CLIENT



PROJECT:
AQUIND Interconnector

TITLE:
**Figure 2 - Application of winter restriction principles
Sheet 14 of 15**

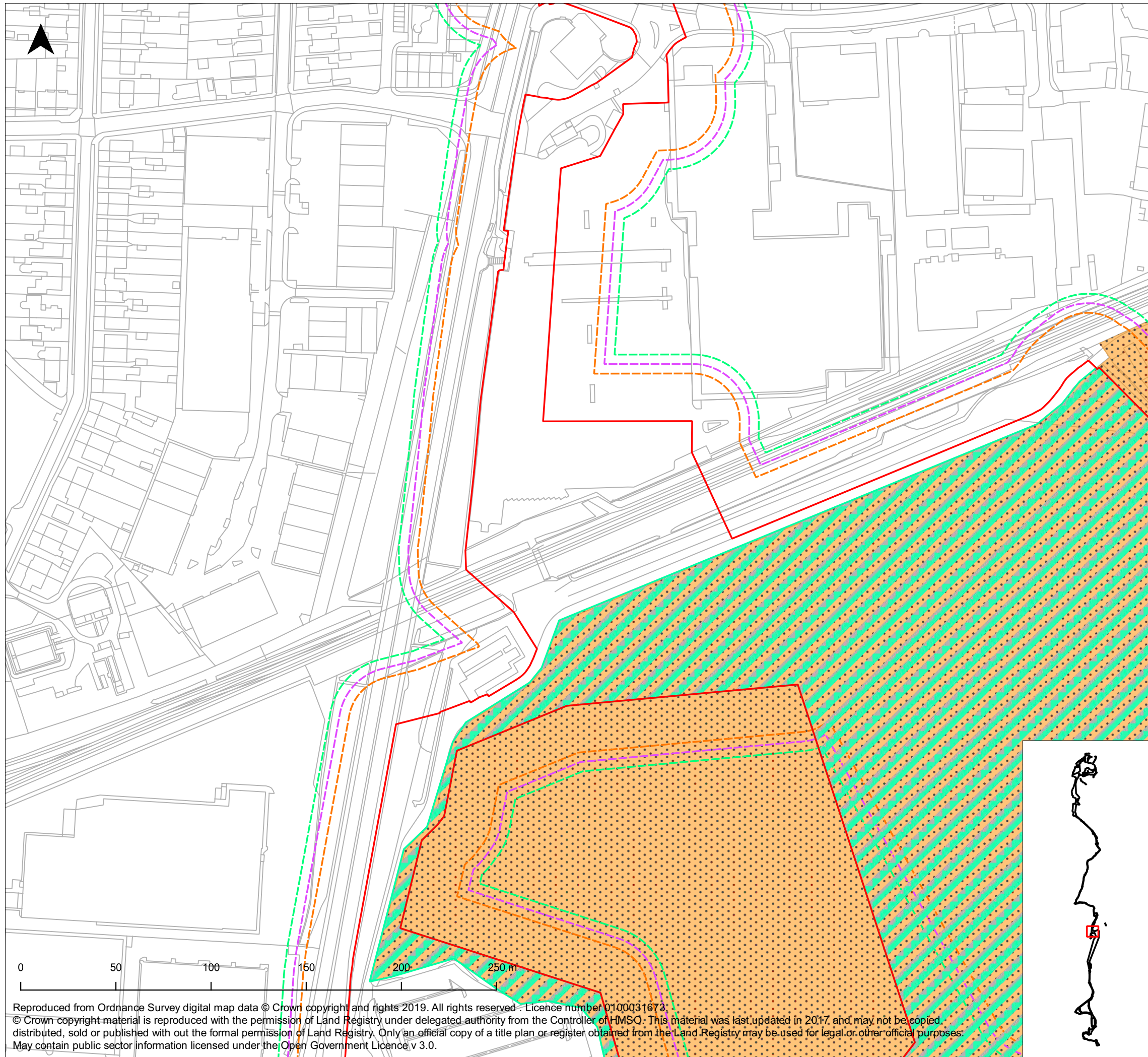
SCALE AT A3: 1:2000	CHECKED: IE	APPROVED: CM
------------------------	----------------	-----------------

PROJECT NO: EN020022	DESIGNED: PJ	DRAWN: PJ	DATE: 16/10/19
-------------------------	-----------------	--------------	-------------------

DRAWING NO: EN020022-ES-APP-16.14-2	REV NO. 01
--	---------------

© WSP UK Ltd

Reproduced from Ordnance Survey digital map data © Crown copyright and rights 2019. All rights reserved. Licence number 0100031673.
© Crown copyright material is reproduced with the permission of Land Registry under delegated authority from the Controller of HMSO. This material was last updated in 2017 and may not be copied, distributed, sold or published without the formal permission of Land Registry. Only an official copy of a title plan or register obtained from the Land Registry may be used for legal or other official purposes.
May contain public sector information licensed under the Open Government Licence v 3.0.



- Legend**
- Order Limits
 - Principle 1 - no winter works in SWBGS Sites
 - Principle 6 - background noise masks construction noise
 - Principle 7 - construction noise >70dB restricted in winter
 - 25m Noise Contour - Minimum possible 70db threshold
 - 30m Noise Contour - Most likely 70db threshold
 - 35m Noise Contour - Maximum possible 70db threshold
 - SPAs
 - SWBGS Sites

Infrastructure Planning (Applications: Prescribed Forms and Procedure) Regulations 2009 - Regulation 5(2)(l)

REV	DATE	BY	DESCRIPTION	CHK	APP
01	16/10/19	PJ	Original	IE	CM

DRAWING STATUS: **FINAL**



WSP House, 70 Chancery Lane, London, WC2A 1AF, UK,
T+ 44 (0) 020 7314 5000
wsp.com



PROJECT: **AQUIND Interconnector**

TITLE: **Figure 2 - Application of winter restriction principles
Sheet 15 of 15**

SCALE AT A3: 1:2000	CHECKED: IE	APPROVED: CM
------------------------	----------------	-----------------

PROJECT NO: EN020022	DESIGNED: PJ	DRAWN: PJ	DATE: 16/10/19
-------------------------	-----------------	--------------	-------------------

DRAWING NO: EN020022-ES-APP-16.14-2	REV NO: 01
--	---------------

© WSP UK Ltd

Reproduced from Ordnance Survey digital map data © Crown copyright and rights 2019. All rights reserved. Licence number 0100031673.
© Crown copyright material is reproduced with the permission of Land Registry under delegated authority from the Controller of HMSO. This material was last updated in 2017 and may not be copied, distributed, sold or published without the formal permission of Land Registry. Only an official copy of a title plan or register obtained from the Land Registry may be used for legal or other official purposes.
May contain public sector information licensed under the Open Government Licence v 3.0.

